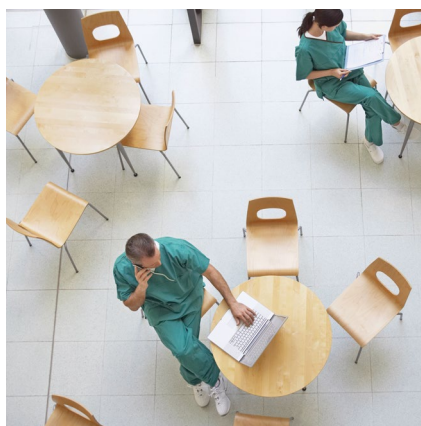
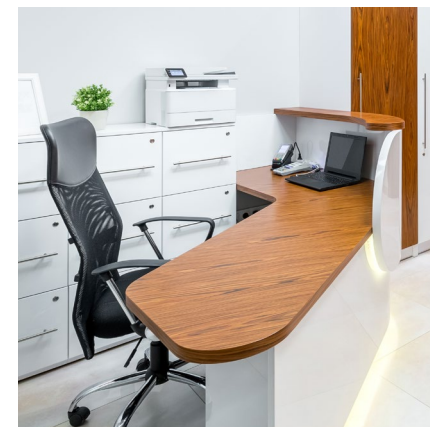
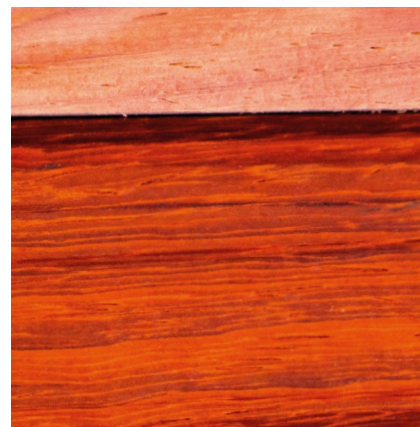


MEMBERS

The strong link in the chain



valdelia
GARANTIR LA SECONDE VIE DES PRODUITS

MEMBERS' GUIDE

A VISION OF THE TRADE



When it set up the end-of-life management pathway for professional furniture in 2013, Valdelia gave fresh impetus to the EPR sector. Valdelia's pioneering vision of the furniture manufacturing industry turns regulatory requirements into growth opportunities. It offers a range of professional services that preserve resources by inviting the stakeholders in its ecosystem to join an organisation that promotes corporate social responsibility and environmental progress. In three years, all business sectors have grasped the added value of the pathway and have come on board en masse, choosing to transfer their regulatory obligations to Valdelia.

Valdelia's success story has taken on a new dimension with the renewal of its agreement by the French Ministry for the Ecological and Inclusive Transition. Guided by a "service mindset" and putting innovation within the grasp of producers, Valdelia rolls out a raft of 'second-life' projects to extend the professional furniture value chain.



Bruno Mouzé (left), *Director of member relations*
Arnaud Humbert-Droz (right), *Executive chairman of Valdelia*

The service offering is being expanded, the links between all ecosystem players are being strengthened, and Valdelia's position as a second life waste manager for all types of professional furniture is being reinforced...

Don't stand on the sidelines of the societal changes that are making the **21st century a true "material age"**.

Join the pathway and get involved in new projects with Valdelia's human, logistical and financial support. You too can be a market mover!



Guided by a "service mindset" and putting innovation within the grasp of producers, Valdelia rolls out a raft of "second-life" projects to extend the professional furniture value chain.

VALDELIA, AT A GLANCE...

33
employees



GLOSSARY

DEA: déchets d'éléments d'ameublement (furniture waste).

Furniture is deemed to be professional if its use and/or distribution channel is exclusively professional.

1,100

Producers are members of and committed to the second life management pathway for professional furniture

2017 figures

WHO?

An EPR licensed by the French Ministry for the Ecological and Inclusive Transition since 2013, Valdelia was first formed in 2011 when 13 manufacturers came together to set up a pathway for the recycling of businesses' furniture waste (DEA).

WHAT?

As a non-profit organisation, Valdelia meets the requirements of France's 2010 Grenelle 2 environmental regulations, and in particular the decree of 6 January 2012 which requires manufacturers and distributors to take responsibility for the collection and management of their end-of-life professional furniture waste.

When they join the pathway, manufacturers and distributors transfer their regulatory obligations to Valdelia.

(See all decrees and rulings)

VALDELIA HAS BEEN CERTIFIED UNDER TWO ISO STANDARDS: ISO 14001 FOR ITS ENVIRONMENTAL MANAGEMENT SYSTEM AND ISO 9001 FOR ITS QUALITY MANAGEMENT SYSTEM.

WHEN ASSESSED FOR THE ISO 26000 CSR STANDARD, VALDELIA WAS AWARDED A SCORE OF 3.6/5.

VALDELIA AT A GLANCE...

18.4
million euros
in eco-fees

70,000
tonnes of used
furniture
collected, of
which 1,620 tonnes
were entrusted
to the network
of third sector

LEO
an in-house
information
system

1
Detailed
traceability
report for each
operation

2017 figures

Over €600k
invested in 2018 in innovation,
research and development projects

III HOW?

Funded by an eco-fee shown on top of the sale price of any item of professional furniture, Valdelia offers a very high value-added service ensuring that end-of-life furniture is traceable. Valdelia has built up a strong network of providers and partners, including sole traders and larger companies, covering the whole country (including France's overseas territories*). Through this network it organises not only pooled collection and management solutions, but also the second life of used furniture.

*Saint-Pierre and Miquelon, Saint-Martin, Guadeloupe, Martinique, French Guiana, Mayotte, Réunion

DID YOU KNOW?

- Reporting to the authorities, a State auditor sits on the Board of shareholders. The eco-organisation sends reports on its activities (quantities marketed, collected, recycled and recovered) to the authorities and to Ademe, the French Environment and Energy Management Agency.
- At the end of 2018, Valdelia met and exceeded the ambitious targets set by the authorities: to achieve 75% re-use, reclamation and recycling.

● TOMORROW?

Thanks to the renewal of its agreement for 2018-2023, Valdelia has a new pledge and a new commitment: to make end-of-life products the resources of the future. We are already working on this "second life" innovation strategy with all the stakeholders in the ecosystem, with a particular focus on eco-design.

YOU ARE DEEMED TO BE A PRODUCER IF...

IF YOU PRODUCE, IMPORT OR DISTRIBUTE FOR THE FIRST TIME ON THE NATIONAL MARKET, PROFESSIONAL FURNITURE THAT IS:

- intended to be sold or given free of charge to the end user, by whatever means the transfer takes place,
- used directly within the national territory of France.

(Extract from article R543-242)



IF YOU BRING TO THE MARKET CUSTOMISED POS.

Your provider of POS (point-of-sale) advertising will be able to send you all the information you need for your declaration.



IF YOU BUY FURNITURE ABROAD FOR YOUR OWN USE.

You are then deemed to be an importer and you must pay the eco-contribution. Your foreign suppliers can help you to gather all the information necessary for the declaration.



FURNITURE ELIGIBLE FOR THE PATHWAY

Wood, plastic, metal or glass...
No matter its constituent materials!
All professional furniture in all business sectors is included.

Furniture eligible for the pathway is split into broad categories* according to function: storage, counters, seating, bedding.

* The categories of furniture and functions are decided by lawmakers (decrees/rulings)

[See categories on the following page](#)



FURNITURE ELIGIBLE FOR THE PATHWAY

According to French legislation, “furniture” means furniture and furniture components of which the main function is to contribute to furnishing a dwelling, shop or public access building by providing seating, bedding, storage, a counter or a worktop.

CATEGORY 1 Lounge, living room and dining room furniture	CATEGORY 2 Occasional furniture	CATEGORY 3 Bedroom furniture
CATEGORY 4 Bedding	CATEGORY 5 Office furniture	CATEGORY 6 Kitchen furniture
CATEGORY 7 Bathroom furniture	CATEGORY 8 Garden furniture	CATEGORY 9 Seating
CATEGORY 10 Technical, commercial and local authority furniture	CATEGORY 11 Padded seating and bedding products	

In practice

The following are excluded from the scope of application of the decree dated 6 January 2012:

- 1 Electrical and electronic equipment (EEE).** This furniture and these furniture components are covered by book V part IV chapter II section 10 of the regulatory section of the French Environmental Code.
- 2 Items of street furniture installed in the public domain and public spaces.**
- 3 Recreational and decorative items.** Practically speaking, very few products are excluded from Valdelia’s sphere of action; most excluded items are decorative components and partitions of any height.

**CONTACT VALDELIA IF YOU ARE UNSURE
WHETHER AN ITEM OF FURNITURE IS ELIGIBLE.**



3 GOOD REASONS TO BE OR BECOME A MEMBER

In a matter of years, Valdelia has developed its expertise and the quality of its bespoke service. Don't wait any longer to join the pathway for professional furniture. Joining an eco-organisation is the first step towards meeting your legal obligations. By making your market release declarations, you are meeting the regulatory requirement to invoice the eco-contribution to your customers.

1 HIGH VALUE-ADDED SERVICE

Valdelia offers its members a shared, turnkey professional furniture waste collection and treatment solution which it funds commensurate with the quantities released to the market the previous year.

The quality of the operational scheme and effectiveness of the service depend on professional waste collection and treatment providers.

In addition, thanks to LEO, its information system, Valdelia sends companies all the traceability data for the furniture managed on their behalf.



2 INNOVATIVE PROJECTS TO GIVE PROFESSIONAL FURNITURE A SECOND LIFE

With the creation of its Innovation Division in late 2017, Valdelia assembled a strong team for piloting and rolling out innovative collaboration projects aimed at extending the professional furniture value chain. All stakeholders are represented. The idea is to move forward together in order to make used professional furniture a future resource. In all business sectors, members have joined forces with third sector companies to pilot and roll out usage processes for end-of-life materials.

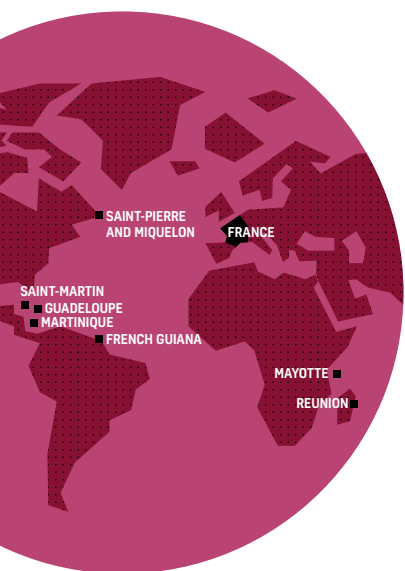
Valdelia's "second life" innovation strategy can complement your and your customers' corporate social and environmental responsibility policies.

You too can step into the world of materials and discover all the opportunities it holds!



Furniture designed and made by Api'Up from wood panels reclaimed from household furniture (chair + Lexi module) and non-household furniture (coffee tables).

3 MEET YOUR REGULATORY OBLIGATIONS



By joining a registered eco-organisation like Valdelia, producers transfer their regulatory obligations to Valdelia. In return, they pay Valdelia an eco-fee earmarked to fund:

- The management of professional furniture waste everywhere in France (including in overseas territories): this means operational solutions for the collection of end-of-life furniture from holder customers (even ten years later), the treatment and traceability of waste, and tracking of service quality.
- “Innovation” projects and R&D projects to give products and materials a second life.
- The eco-organisation’s running and communication costs.



BY LAW, YOU MUST MEET EXTENDED PRODUCER RESPONSIBILITY (EPR) REQUIREMENTS FOR THE MANAGEMENT OF FURNITURE WASTE. IN OTHER WORDS, PRODUCERS ARE RESPONSIBLE FOR THE COLLECTION AND MANAGEMENT OF THEIR FURNITURE AT END-OF-LIFE. EPR IS ENSHRINED IN THE FRENCH ENVIRONMENTAL CODE
(See all decrees and rulings)

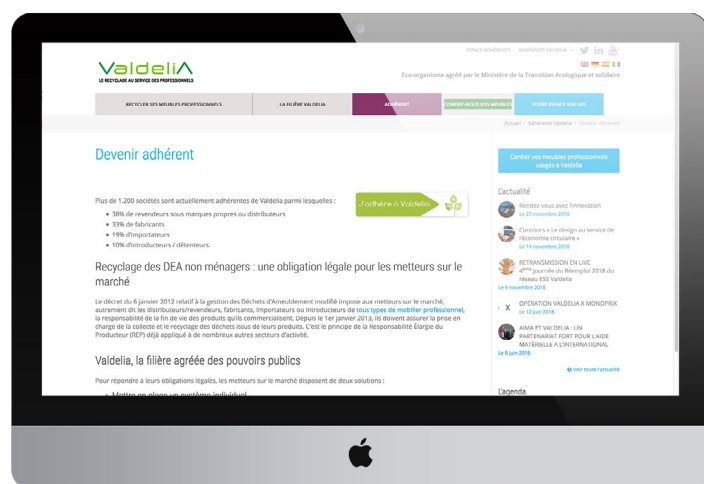


JOIN THE PATHWAY: A USER GUIDE

More than 1,100 producers from all business sectors are now members of the pathway and are committed to giving professional furniture a second life. Don't stand on the sidelines of this dynamic and innovative ecosystem!

Join the pathway: it is another way of standing out from the competition, embracing new service activities, and helping to preserve resources. It is easy and free to join. Follow the guide...

ONLINE MEMBERSHIP: QUICK, EASY AND FREE

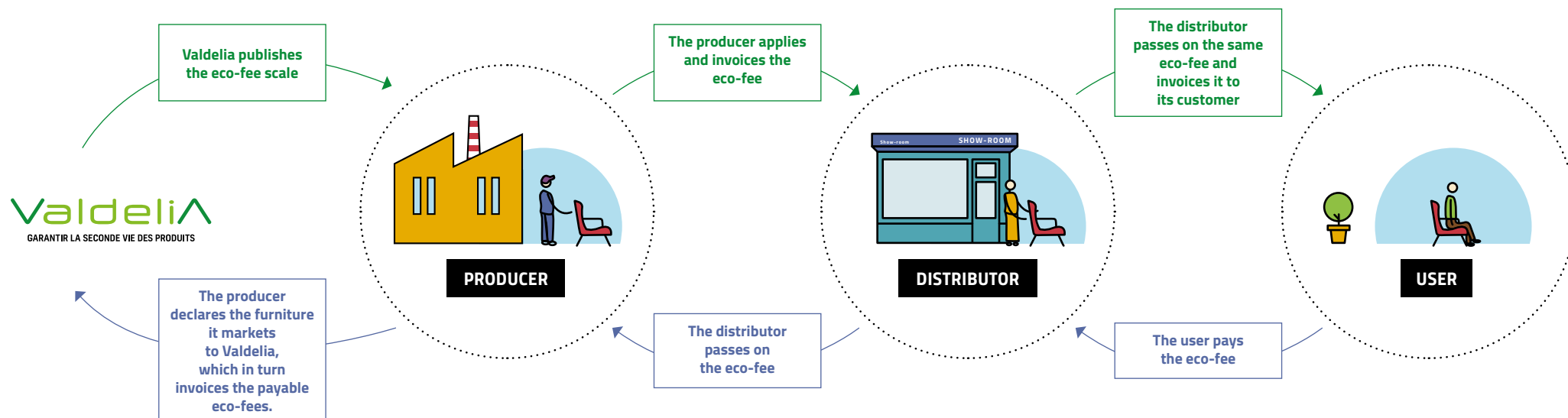


To join Valdedia, members sign a membership contract which sets out Valdedia's services and the member's obligations. Contracts take effect on 1 January of the membership year. For 2019, for example, market release declarations are made retroactively from 1 January, whatever date the organisation joins during the year.

- By joining Valdedia, producers agree to provide all the information needed for the service to operate properly, in accordance with the conditions of the membership contract.
- Producers also agree to pay Valdedia the eco-fee sums payable by the contractually defined due dates.

ALL INFORMATION
ON THE MEMBERSHIP
PROCEDURE IS
AVAILABLE ON
WWW.VALDELIA.ORG
UNDER "ADHÉRER
À VALDELIA"
(JOIN VALDELIA)

ALL ABOUT THE ECO-FEE



The eco-fee: line by line

The eco-fee is the amount paid by producers to the eco-organisation of which they are members. It uses quantitative market release data from the previous year to determine funding needs for the subsequent year ([see the 2019 scale](#)).

- The scale is applied to each item of furniture according to weight, majority material, and function (storage, counter, seating, bedding, etc.). It is also based on after-sales items.
- In addition to the sale price of the product, the eco-fee must be passed on without modification to the end customer. It applies as of the date of the market release declaration even if the scale has changed compared with the date of sale.
- This amount must be displayed separately from the unit price of the furniture and be clearly identified on the product sale label, commercial documents and the end customer's invoice. This amount is subject to VAT and cannot be discounted.
- For producers, the eco-fees payable are calculated according to the individual market release declarations from the previous quarter.
- The scale applicable on 1 January of the year N is released before the month of July of the year N-1.

DID YOU KNOW?

A 100% French regulation. The eco-fee does not apply to furniture for export.

ECO-FEE: VALDELIA AND ME?

1 I declare the furniture I market

- The date of the sales invoice determines when the market release declaration must be made.
- Market release declarations are made one quarter in arrears. For example, items of furniture invoiced in January, February and March are declared between 1 and 20 April. Only advertisers marketing customised POS advertising will have the option to make their declarations on the date these items enter or leave their stock.
- Market releases must be stated in units and weight (kg). Valdelia defines a unit as a functional set. For example, a desk is deemed to be a unit; the desktop and legs form part of the same functional unit.

See a specimen declaration form.

2 Valdelia invoices the payable eco-fee to me

The eco-fees payable to Valdelia by each member are calculated on the basis of the previous quarter's individual furniture market release declarations.

3 I pay my eco-fee when I receive an invoice



VISIT OUR
WEBSITE
[VALDELIA.ORG](http://valdelia.org)
AND DOWNLOAD
THE "GUIDE DE
DÉCLARATIONS".
IT CONTAINS A
STEP-BY-STEP GUIDE
TO FILLING IN YOUR
MARKET RELEASE
DECLARATIONS.

ECO-DESIGN

THE PATHWAY EXTENDS...

Valdelia, a second life manager for all types of professional furniture, encourages and supports its members with eco-design, which means the implementation of virtuous practices to extend the lifespan of products.

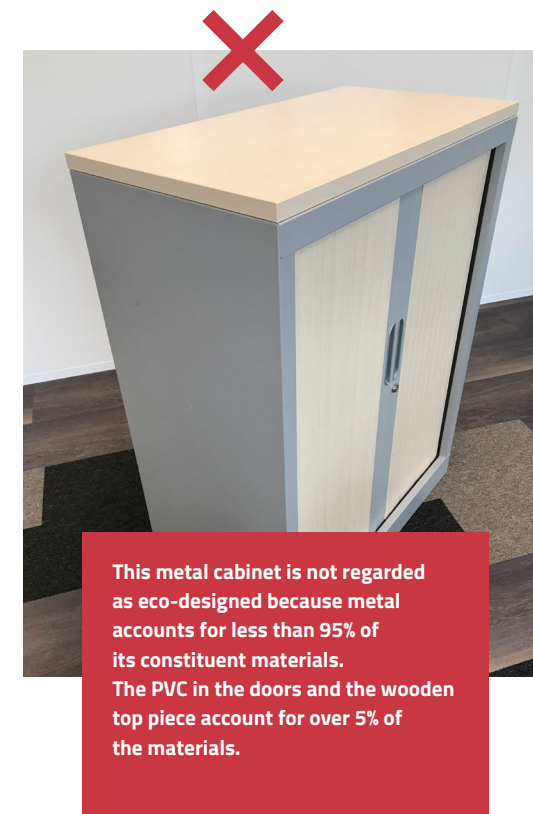
For the purposes of market release declarations, Valdelia has defined an initial "eco-design" eligibility criterion: **a single material – timber from PEFC-certified forests or metal – must make up at least 95% of each functional unit.** Other criteria are being examined, such as:

- the presence of recycled parts or materials,
- the availability of spare parts to make repairs easier,
- the presence of recycling-friendly materials,
- etc.



GLOSSARY

Eco-design is an approach to production that seeks to reduce environmental impacts in the design, development and use of an object throughout its life cycle (extraction of raw materials, manufacturing, logistics, transport, use and obsolescence).



SPECIMEN DECLARATION FORM

Member number	1042
Company name of the producer	Company name
SIRET	123456789
Contract manager's name	Pierre Mathieu
Telephone	01 12 23 34 45
E-mail address	pierre.mathieu@nomdelentreprise.fr

All the information in this chart is required by the authorities

Table to be completed in the LEO information system.

Download the "Guide de déclaration" and follow the step-by-step guide to making your declarations.

Producer's status (see list of statuses)	Item status	Organisation	Category of decree to which the product belongs (see list of categories)	Function which the product serves (see list of functions)	Product	Material of the product > 50% of net weight (see list of materials)	Total units sold	Unit weight kg	Of which eco-designed product (not to be declared until 2014)		Valdelia family (see the similarity between function and family)
									PUnit and family weight in kg	Total units sold	
Manufacturer	PRO	VALDELIA	Cat 10	Storage	940320	02	200	56,1	0	0	storage
Manufacturer	PRO	VALDELIA	Cat 10	Storage	940330	01	34	45,23	0	0	storage
Manufacturer	PRO	VALDELIA	Cat 10	Storage	940370	05	1234	83,123	0	0	storage
Manufacturer	PRO	VALDELIA	Cat 4	Bedding	940421	09	21	10,6	0	0	other
Manufacturer	PRO	VALDELIA	Cat 5	Counter	940330	08	47	22,7	0	0	counter

- 1 Item status: always professional for the purposes of the Valdelia declaration.
- 2 One of the 11 categories in the decree (see the categories).
- 3 The main function of the product as defined by the decree.
- 4 The SH6 customs nomenclature code.
- 5 Majority material: by majority material Valdelia means the material that accounts for at least 50% of the composition of the product, or 95% of its unit weight.

- 6 The quantity sold expressed in functional units.
- 7 Net weight (excluding packaging) of the furniture expressed in kilos for each functional unit.
- 8 Eco-designed product: there are now criteria defining eco-designed products as those containing at least 95% metal or solid timber from PEFC-certified forests. Other criteria will be added soon.
- 9 Valdelia family: storage, counter, seating, other.
Non-regulatory, but required for the operation of the eco-organisation.

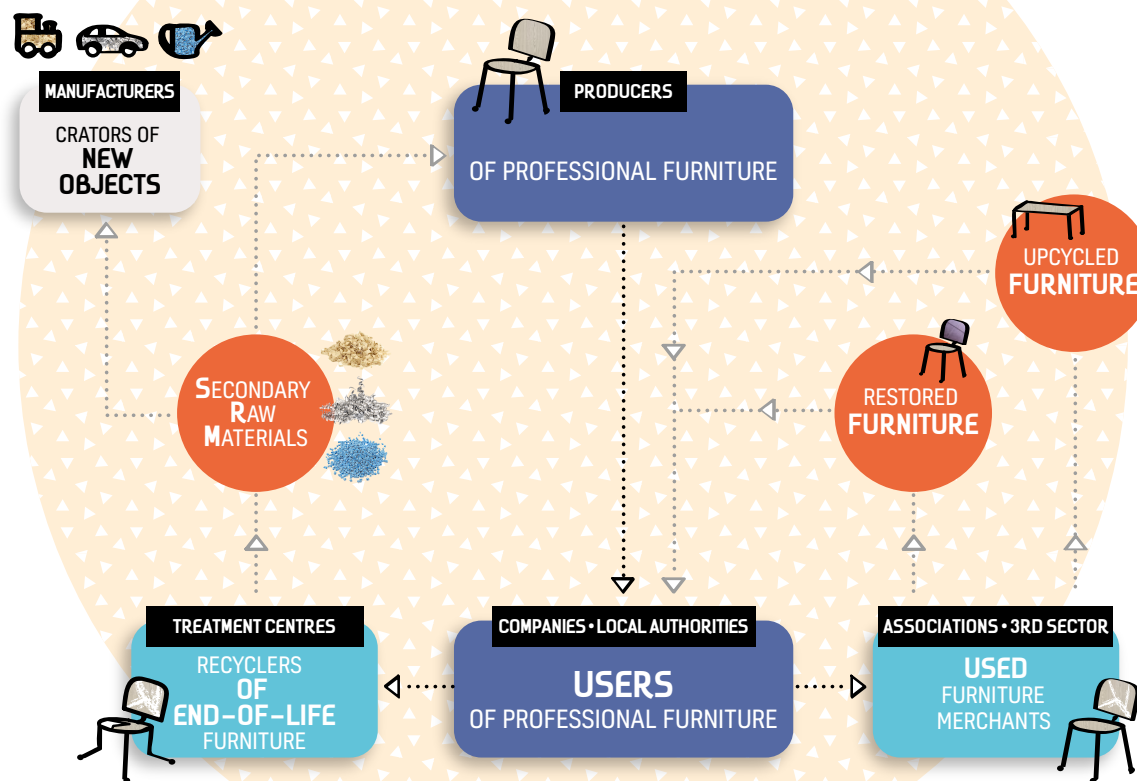
GIVING FURNITURE A SECOND LIFE

Helping professional furniture set an example by creating a virtuous circle... By joining and paying eco-fees to Valdelia, **PRODUCERS** transfer to the eco-organisation their responsibility for collecting and managing used furniture. These sums fund all its work: from collection to treatment, from traceability to the tracking of service quality, and from investments in R&D to communication.

How does Valdelia reach over **500,000 COMPANIES AND LOCAL AUTHORITY ACTORS** that want to dispose of their furniture without polluting? By giving furniture a second life via its network of **THIRD SECTOR ASSOCIATIONS AND ACTORS**. These organisations are well placed to repair, restore or remodel furniture or work with raw materials to turn waste professional furniture into new furniture that is ready to use in other organisations, companies or local authorities.

The **53 TREATMENT CENTRES** treat the raw materials from broken or damaged furniture. These raw materials become new resources that feed into new product and object manufacturing chains, for business or mass market use.

SECOND LIVES FOR PROFESSIONAL FURNITURE



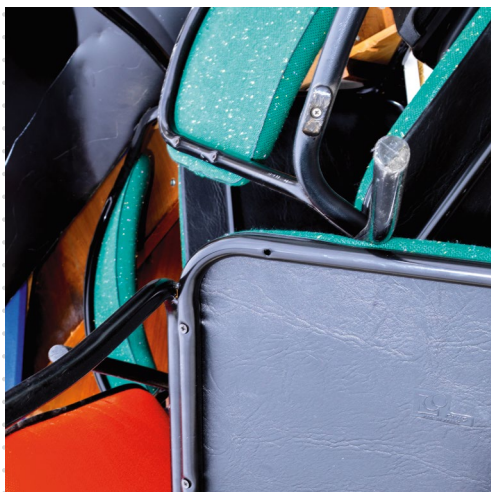
DONATION IS A VERY RESPONSIBLE COURSE OF ACTION FOR A COMPANY TO TAKE AS IT CONTRIBUTES TO LOCAL ECONOMIC DEVELOPMENT, HELPS PEOPLE BACK TO WORK AND PROVIDES MATERIAL ASSISTANCE OVERSEAS.



A PREPAID SERVICE FOR YOU AND YOUR CLIENTS

As members of the pathway, you give your customers the option to dispose of their used furniture without sending it to landfill or polluting the environment. What's more, you can join the partner networks of CMVs (Voluntary Collection Centres) and PAVs (Voluntary Drop-off Points) to give your customers a personalised and coordinated collection solution. A high value-added service to keep your customers loyal and help them make CSR improvements.

ALL COMPANIES IN ALL BUSINESS SECTORS ARE AFFECTED



COMPANIES

Manufacturing
Offices
Distributors
Healthcare
Culture
Shops
Hotels
Restaurants
Schools
Leisure
Government agencies

ENVIRONNEMENT

Industrial site
Logistics hub
Town centre
Village
Business district

FURNITURE

[See all
professional
furniture](#)

QUANTITY

20 m³ and over.
For smaller
quantities,
Valdelia has a
network of partner
PAVs (Voluntary
Drop-off Points).

WOOD, PLASTIC, GLASS, METAL...
NO MATTER THE MATERIAL
AND NO MATTER THE CONDITION
OF THE FURNITURE.

3 COLLECTION OPTIONS

Foot of building collection

For quantities in excess of 20 m³, Valdelia assigns a single contact person to organise free, bespoke collections that are safe and reliable. The containers provided by Valdelia are suited to specific types of site, categories of product and quantities to be collected.

Visit ***valdelia.org*** to complete the removal form. Only the holder of the waste may complete the removal form. A disposal provider, removal firm, or furniture reseller may make the request on the holder's behalf, but it is the holder who is committed to abide by the general terms and conditions of use of the Valdelia service.



DID YOU KNOW?

The holder of furniture for disposal is responsible for transferring furniture waste from inside buildings into containers.

3 COLLECTION OPTIONS

Drop-off sites at collection centres

For quantities of furniture below 20 m³, Valdelia offers a local collection service in the form of voluntary collection centres (CMVs). For this solution, designed to collect small, regular quantities of furniture waste, you need to keep a permanent skip on your company's premises and organise regular, scheduled collections (at least once per month).

Take advantage of Valdelia's value-added service and become a CMV! You will then be able to offer an additional service to your customers and all furniture holders in your catchment area, allowing them to dispose of small quantities of furniture waste. By becoming a CMV, you can develop your business activities and also increase your chances of meeting new customers in search of waste disposal solutions. What's more, you will be supporting companies and making it easier for them to make CSR and environmental improvements.



GLOSSARY

A collection centre is a hub where members can collect small quantities of furniture waste originating from their own business or their customers' businesses.

3 COLLECTION OPTIONS

Collection at Voluntary Drop-off Points (PAVs)

Any member who produces or collects professional furniture waste may take their small quantities of waste (less than 20 m³) to a Valdelia network PAV. This neighbourhood collection service is also open to all companies and local authorities.

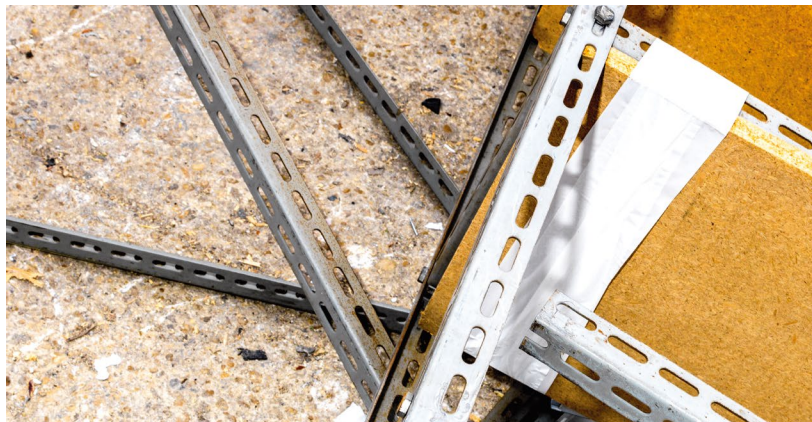


GLOSSARY

Mainly located on the premises of partner third sector companies, PAVs (Voluntary Drop-off Points) are open to all professionals looking to dispose of end-of-life furniture in quantities below the threshold of 20 m³.



135
PAVs in France



DID YOU KNOW?

If you are unable to take your small quantities of waste to the nearest PAV, Valdelia recommends the Mikrô solution. A customised handling and collection service specially designed for bulky professional waste in quantities of under 20 m³.
mikro-service.fr



CONTACT US

Tel. **0 800 000 620** Service & appel gratuits

Site: www.valdelia.org

Email: contact@valdelia.org

Zac de l'Hers
93 rue du Lac
31670 Labège
French public limited company (SA)
with capital of 154,000 euros
537 406 373 RCS Toulouse

brandminded by AUSTRALIE

Photos: © Adobe Stock [Africa Studio, Biker3, Hacohob, Aleksandr Kurganov, Wavebreak Media, Tyler Olson, Vitec40, Alena Yakusheva] ; Alain Fouray ; iStock [Antorti, In4mal, MediaProduction, Monkeybusinessimages, Mustafagult] ; Eric Larrayadieu ; Photothèque Valdelia ; Elias Sfaxi